



An Intro to CORDURA® Brand





CORDURA® brand fabric technologies are the **invisible layer of confidence** in apparel, gear, accessories and more that you own... and trust.



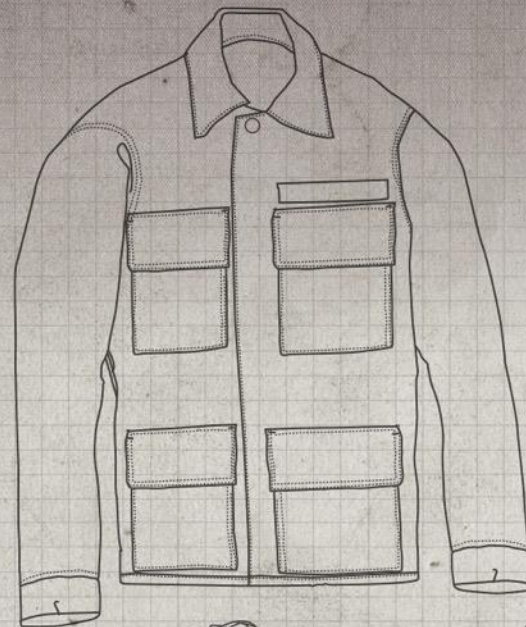
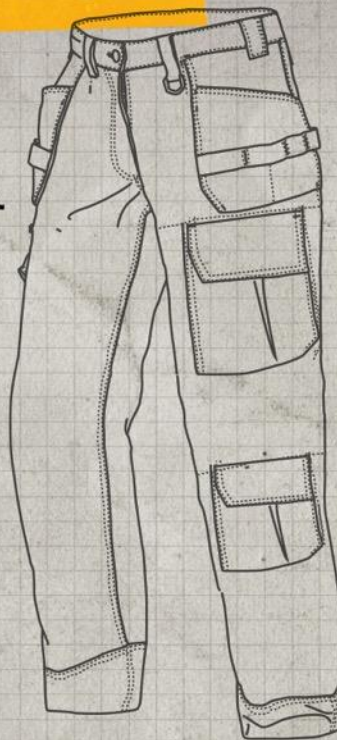
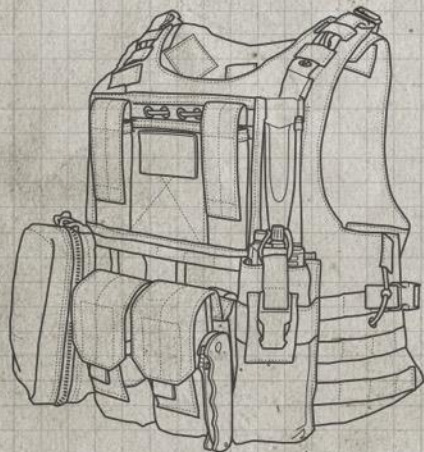
For the last 50 years, we have stayed true to our Core...

CORE OF **DURABILITY**

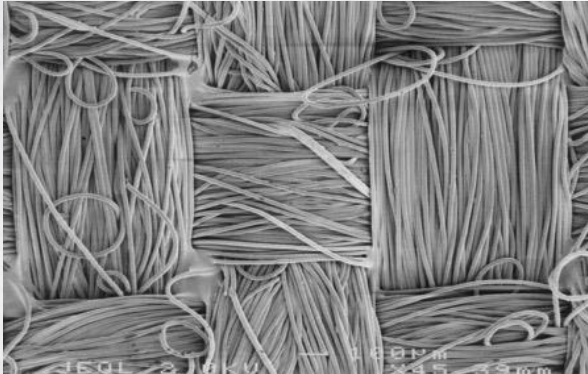
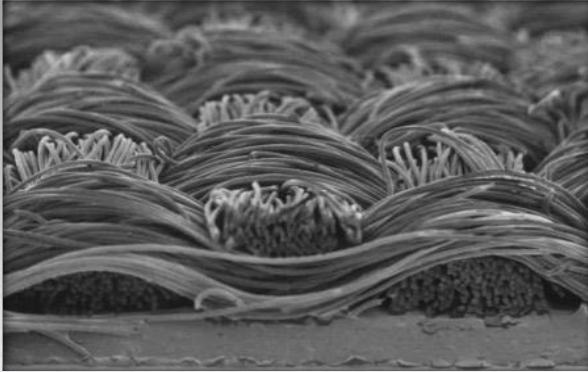
Fabrics with uncompromising durability, comfort and wearability designed for long lasting performance.

DURABILITY FOR EVERY PROJECT

Military, tactical, and law enforcement – including bags and packs, hunting gear, body armor, uniforms and caps and more.



What is CORDURA® fabric?



CORDURA® fabrics...

...are high-performance, super-durable materials found in a wide variety of premium products

CORDURA® fabrics...

... are constructed with qualifying INVISTA yarns

CORDURA® fabrics...

...are constructed in accordance with INVISTA's approved fabric standards for the CORDURA® brand

CORDURA® fabrics...

... are branded materials produced by INVISTA authorized mills around the world

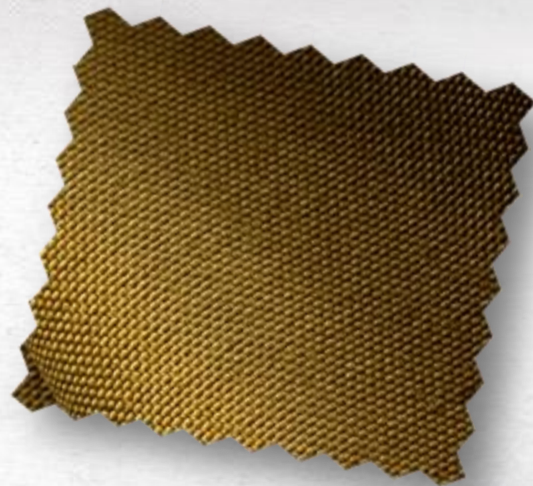
Photos above are Scanning Electron Microscope (SEM) >300X magnification showing front and side views of a typical 1000d air textured nylon CORDURA® fabric.

CORDURA[®] CLASSIC FABRIC

CORDURA[®] Classic fabric provides rugged durable performance for a variety of end uses, including packs, luggage, footwear and performance apparel. Products made with CORDURA[®] Classic fabrics feature enhanced tear and abrasion resistance, and long-lasting durability.

Benefits

- Stylish durability and exceptional strength-to-weight ratio
- Resistant to tears, scuffs and abrasions
- Original classic CORDURA[®] fabric look
- Available as solution dyed which are inherently stain resistant and easy to clean
- Air jet textured for high abrasion resistance
- Available in 500d and 1000d

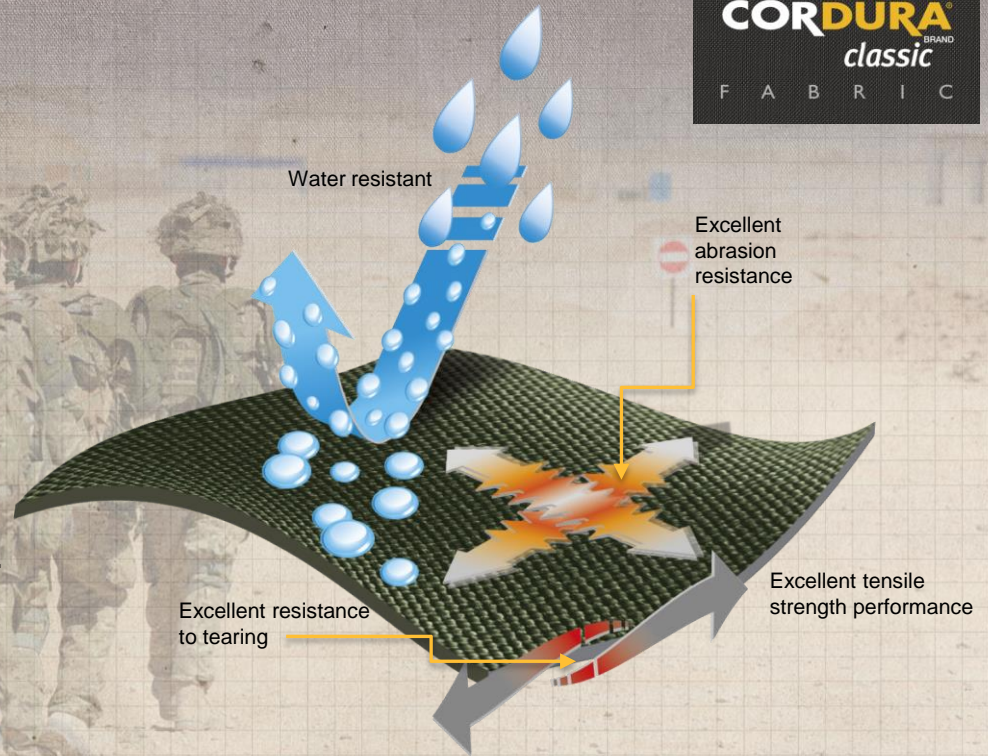


CORDURA® CLASSIC FABRIC



MADE FOR EVERY MISSION

- Made with high tenacity CORDURA® 500D and 1000D nylon 6,6 fiber technology.
- Resistant to abrasion, puncture and tears.
- Available in Solution Dyed or piece-dyed solid shade colors.
- Can be polyurethane coated for water resistance.
- Waterproof fabric and/or laminate options available.
- Compatible with flame retardant back coatings
- Range of fabric weights and constructions (500D and 1000D) offering reduced weight options without sacrificing durability or performance.
- Available in palette of 6 US Military solution dyed colors that can meet both shade and NIR(Near Infrared) requirements.



Hardwearing



Abrasion Resistant



Tear Resistant



Waterproof*



Built to last

*A range of water resistant options are available through the use of coating and/or laminate technologies

**CORDURA® CLASSIC FABRICS SOLUTION
 DYED NYLON (SDN) YARN TECHNOLOGY**

COYOTE SDN SUBSTRATE COMPARISON



IMPROVING SOLDIERS STEALTH

- Resistance to sunlight UV fade and strength loss.
- Resists “frosting” under abrasion.
- Dull matte luster that reduces shine and light reflectance.
- Solution Dyed background colors provide lot consistent print background colors.
- Significant water and energy savings compared to piece dye process (saves up to 2 liters of water per meter of finished fabric).



UV Fade
 Resistant



Abrasion
 Resistant



Tear
 Resistant



Hardwearing



Built
 to last

*Data based on 2013 independent life cycle analysis study in co-operation with authorized CORDURA® fabric producers.

HLC CORDURA® FABRIC OFFERINGS



In stock 500 and 1000d Solution Dyed Nylon (SDN) CORDURA® Classic fabric:

- **Ranger Green**
- **Black**
- **Coyote-498**
- **Tan-499**
- **Wolf Gray**



www.HLCindustries.com